

RAHAB

Woman of faith, truth, courage, and belief

One of the most amazing and thought provoking women of the Old Testament, Rahab, a prostitute, earned unique praise for her faith and a place in the lineage of Jesus the Messiah.

**CALMING,
NURTURING,
STRENGTHENING**

Rahab did not let her circumstances keep her from dreaming of a different life; a life of respect, love and family. When God presented Rahab with a way out of her life of shame and degradation and a chance to be part of his people, she took it.

Rahab blend is formulated to increase your faith and connection to God, and knowledge that your life can change and what you most desire can be fulfilled. It doesn't matter what label the world gives you, it matters what's in your heart and who you and God know you to be.

Rahab blend is a powerful way to instill the courage and faith needed to move forward and do whatever is necessary to make your life what you know it could be. This blend also helps to give energy to the Throat Chakra, our center of personal honor and ability to speak the truth.

Available in: 5ml Bottle

daily uses

BATH

One of the ways essential oils were most often used in the time of Rahab.

- Add 10-15 drops of Rahab blend to ½ to 1 cup of Pink Himalayan or Dead Sea bath salts, and add to your bath. Soak 10-20 minutes for best results. The Rahab bath will detox past shame or disappointment in yourself and your life allowing forgiveness to take place. For intensive therapy, soak once a day; if you can't do a full bath you can do a foot soak instead.
- For a foot bath, add 8-12 drops of Rahab blend to ½ cup of Pink Himalayan or Dead Sea bath salts and soak feet 10-20 minutes for best results.

MISTING SPRAY

In Rahab's time essential oils and resins were burnt as incense for prayer and offerings. We can use the spray misters to send the essential oils into the air without the smoke.

- Mix 12-15 drops in a 4 ounce cobalt blue spray bottle of distilled water. Mist around yourself, front and back, whenever your faith in God or yourself is in question, or when fearful and in need of courage to change your life. Think of Rahab who kept her faith in the face of almost certain death and took action when God gave her the opportunity. Can be used throughout your environment to create a frequency of courage, faith, strength, and personal power. Shake well before use.
- Mix 6-8 drops in a 2 ounce cobalt blue spray bottle to carry with you. Mist generously whenever you need extra support at work or when away from home. May also be shared with a friend or family member in need of Rahab's faith and courage.
- Diffuse 10-15 drops in your water mist diffuser and mist into the environment.

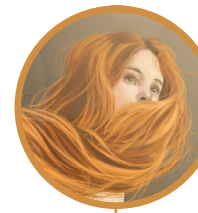
TOPICAL

Applying to the head and feet was an important way to use essential oils in Rahab's time. Women also were known to apply essential oils to the entire body as a lotion; this was thought to enhance their connection to God and their spiritual life.

- Apply 1-3 drops to the sole of each foot. This helps to give energy to the Throat Chakra, our center of personal honor and ability to speak the truth.
- Apply 1-2 drops to the Heart Chakra and know that you are not insignificant to God; that you are loved and cared for.
- Apply 1-2 drops to the Crown Chakra, our personal connection point to the divine guidance and protection that we receive from God.
- Add 10-15 drops per ounce of goDesana body lotion and use after your bath to nourish and moisturize the skin while surrounding your body with the spiritual essence of Rahab.

RESPONSIBLE CAUTIONS

- Non-irritating, non-sensitizing; for topical and aromatic use only.
- Keep out of reach of children and away from the eyes.
- Store at room temperature with lids securely tightened; keep away from sunlight.



Women of The Bible Blends

ingredients

100% pure, therapeutic grade, certified organic and/or wild-crafted oils of Black Spruce, Balsam Copiaba, Cistus, Clary Sage, Elemi, Pink Grapefruit, Inula, Lavender Vera, Sweet Marjoram, Plumeria, Patchouli, Rockrose, Sage, Spikenard, Tanacetum Annuum, Geranium, Tangerine, Balsam Fir, Ylang Ylang Complete, and Certified Organic Fractionated Coconut Oil.

pulse points

Add 32 drops of Rahab and 8 drops of the carrier oil of choice to glass roll-on bottle.

Roll on one or more pulse points during prayer, reflection, and affirmations.

1. *Temporal Artery:* Located just above the temple, on the sides of the head.
2. *Carotid Artery:* Located on the side of the neck above the clavicle.
3. *Brachial Artery:* Located on the inside of the arm above the elbow.
4. *Radial Artery:* Located on the wrist.
5. *Femoral Artery:* Located in the inside front of the leg where it joins the pelvis.
6. *Posterior Tibial Artery:* Located on the foot behind the ankles.
7. *Dorsalis Pedis Artery:* Located on the top of the foot.



QUALITY ASSURANCE

All goDésana essential oils are 100% Pure Therapeutic Grade that are Certified Organic and/or Wild-Harvested. They are sourced, formulated and approved by Alexandria Brighton. Oil samples, along with the Material Safety Data Sheets, Certification Documents and GC/MS Chromatography Documents, are sent to Alexandria for her approval prior to being shipped to goDésana.

